



A NEW LOTTO MAX IS COMING SOON!

We are planning some changes to LOTTO MAX for **April 2026** that will make the game bigger and better – translating into bigger and better sales for you!

These changes are supported by and based on customer research and will ensure LOTTO MAX continues to be a top seller with our players. More details will be provided as we get closer to the launch in April 2026.



IN PREPARATION FOR THESE CHANGES, THE ADVANCE PLAY AVAILABILITY FOR LOTTO MAX WILL BE AFFECTED FOLLOWING THE DRAW BREAK ON OCTOBER 14, 2025.

Currently, customers can play up to 26 weeks (52 Draws) with Advance Play.

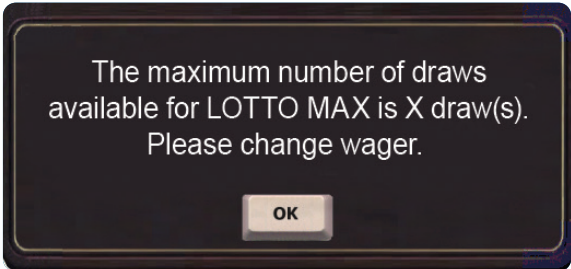
The number of Advance Play draws available will be reduced after the Draw Break (10:30 p.m. ET) on October 14, 2025, until April 10, 2026, the day prior to launch.

Date	# of Draws Available (after Draw Break)
Tuesday, October 14, 2025	26
Tuesday, February 24, 2026	13
Friday, March 6, 2026	10
Friday, March 20, 2026	6
Tuesday, March 24, 2026	5
Friday, March 27, 2026	4
Tuesday, March 31, 2026	3
Friday, April 3, 2026	2
Tuesday, April 7, 2026	1
Friday, April 10, 2026	LOTTO MAX wagers disabled at 10:30 p.m. ET
Saturday, April 11, 2026	52 Draws available for purchase



Play Smart

When the number of draws selected exceeds the number of draws available, the following pop-up will display: "The maximum number of draws available for LOTTO MAX is X draw(s). Please change wager. OK".



Self-Serve Lottery Terminal Advance Play

Effective October 14, 2025, Advance Play for LOTTO MAX will not be available on the Self-Serve Lottery Terminal. It will become available again in April 2026 when the new LOTTO MAX launches.

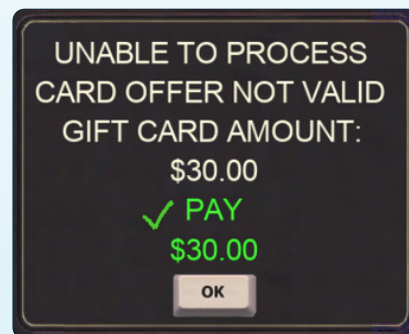
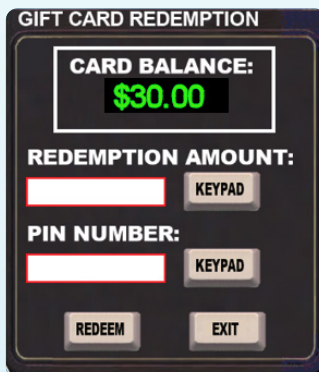
LOTTO MAX Defined Offer Gift Cards

Defined Offer Gift Cards are redeemable until March 27, 2026. After March 27, the option to REFUND the gift cards will be available.

After March 27, 2026, upon redemption, a pop-up will appear giving you the option to refund the price of the card.

Selecting **OK** on the pop-up will produce another pop-up that allows you to enter the gift card **REDEMPTION AMOUNT** and **PIN**. Then select **REDEEM** to complete the refund.

Selecting **OK** on the final pop-up will complete the refund, and a customer receipt will be printed.



Customers can call OLG at 1-800-387-0098 if they have any questions.



Play.Smart